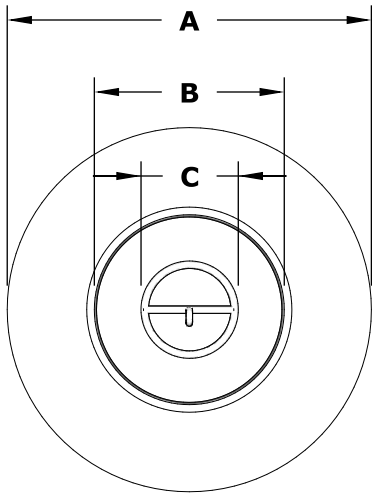
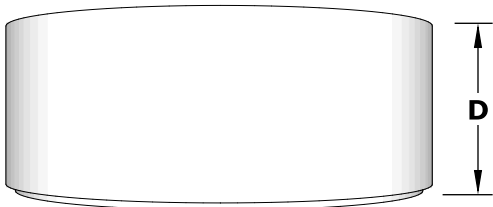


The Unity Fire Pit

Powder Coated



TOP VIEW



FRONT VIEW

SPECIFICATIONS

PART NUMBER	A	B	C	D	BTU
OPT-UNYPC4818	48"	25"	12"	18"	65,000
OPT-UNYPC6018	60"	37"	18"	18"	160,000
OPT-UNYPC7218	72"	43"	24"	18"	190,000

Gas Requirements

Gas Type: Natural Gas or Propane
Gas Inlet: 1/2" NPT Female
Total BTU: 65K - 125K

*All Match Lit Units up to 65K BTU are LC Certified
 *All Electronic Units are CSA Certified



What's Included?

Match Lit Unit:
 - Fire Pan, Burner, Gas Orifice, Gas Hose, Key Valve with Key

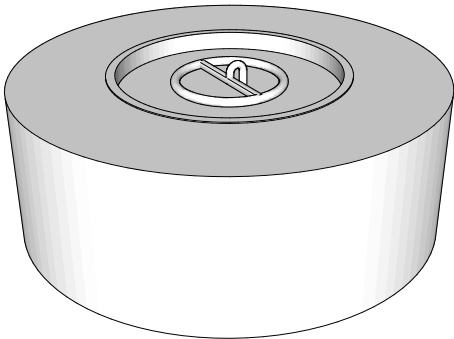
Low Voltage Unit:
 -Fire Pan, Burner, Gas Orifice, Gas Hose, Key Valve with Key, Low Voltage Electronic Valve, Pilot Ignitor

Plug & Play Unit:
 -Fire Pan, Burner, Gas Orifice, Gas Hose, Key Valve with Key, Plug & Play Electronic Valve, Pilot Ignitor - ANSI Z21.97-(2017) / CSA 2.41-(2017)

Spark Glow Unit:
 -Fire Pan, Burner, Gas Orifice, Gas Hose, Key Valve, Spark Button, Pilot Ignitor

Fire Glow Unit:
 -Fire Pan, Burner, Gas Orifice, Gas Hose, Built-In Key Valve, Spark Button, Pilot Ignitor

*Standard 1" Flange on all pans
 *Standard 2" Depth on all pans



ISOMETRIC VIEW

Drawn By	Andrea S.
Date Created	August 1, 2025

Proprietary & Confidential: The information contained in this drawing is the sole property of **The Outdoor Plus**. Any reproduction or as a whole without written permission of **The Outdoor Plus** is prohibited.